

# PLAT II OF MARINER VILLAGE, P. U. D. (R)

IN PART OF SEC. 31, TWP. 30S, RGE. 42E,  
SEC. 1, TWP. 30S, RGE. 41E,  
AND SEC. 6, TWP. 30S, RGE. 42E  
MARTIN COUNTY, FLORIDA

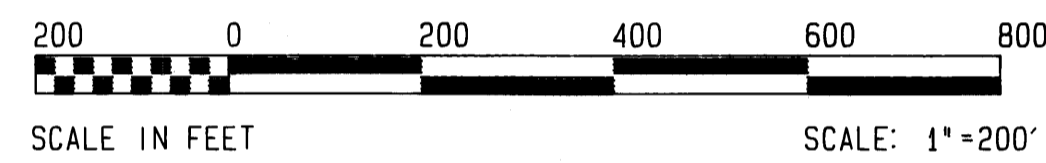
SHEET 2 OF 4

CUNNINGHAM & DURRANCE  
CONSULTING ENGINEERS, INC.  
WEST PALM BEACH, FLORIDA

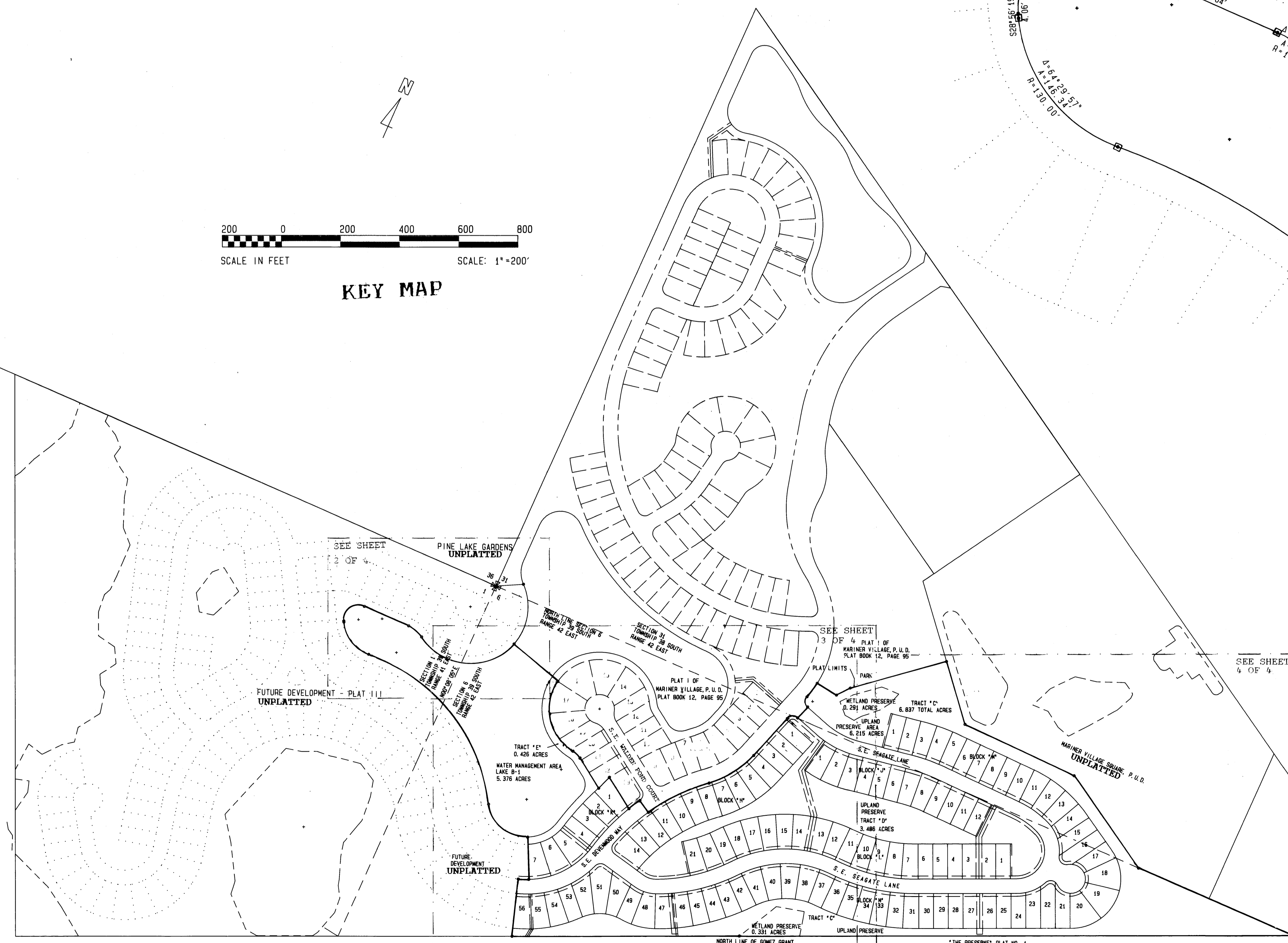
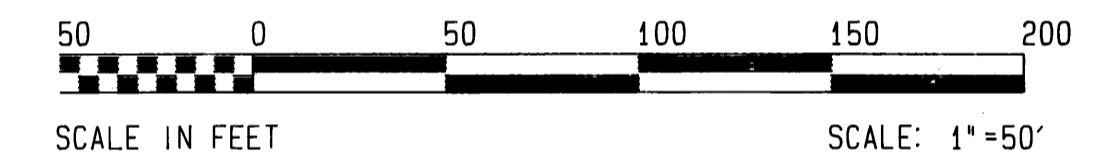
STATE OF FLORIDA  
COUNTY OF MARTIN

I, HANNA STILLER, CLERK OF THE CIRCUIT  
COUNTY OF MARTIN COUNTY, FLORIDA HEREBY  
CERTIFY THAT THIS PLAT WAS FILED FOR  
RECORD IN PLAT BOOK 12, PAGE 95  
MARTIN COUNTY, FLORIDA PUBLIC RECORDS  
THIS 22<sup>ND</sup> DAY OF 2002. 10:23  
HANNA STILLER, CLERK  
CIRCUIT COURT  
MARTIN COUNTY, FLORIDA

BY: *Hanna Stiller*  
DEPUTY CLERK  
FILE NUMBER: 1121855



KEY MAP



NORTH LINE OF BONEY GRANT AS RECORDED IN PLAT BOOK 11, PAGE 80 OF THE PUBLIC RECORDS OF PALM BEACH COUNTY, NOW MARTIN COUNTY.  
\* THE PRESERVE PLAT NO. 1 AS RECORDED IN PLAT BOOK 11, PAGE 76 OF THE PUBLIC RECORDS OF MARTIN COUNTY.